



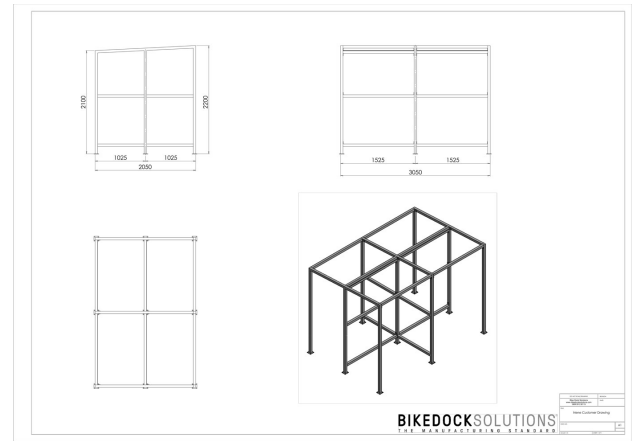
Square Waiting Shelter

Ex. VAT: £3,340.00 **TOTAL**
Inc. VAT: £4,008.00

*Base price, not including any custom options.

Product Images





Description

A neat solution for anywhere that requires outdoor shelter, with a resilient and secure design. Fits perfectly in the open or in a corner. Great for all users that need a quick and economical solution for waiting outside, such as doctors surgeries and places of work.

Waiting Shelter Specification:

- Flat roof design
- Galvanised Steel or Powder coated finish, or for extra sustainable protection galvanised and powder coated finish;
- Durable powder coated frame available in blue, red, yellow, white, green, black or grey
- Flat pack construction with assembly instructions
- Polycarbonate Roof and Divider
- Size shown on website, but bespoke sizes can be made. Get in touch with your request
- 3050mm L x 2050mm W x 2100mm High (for up to 4 people) Other bespoke sizes available.

Delivery time

Typical time: 2-4 weeks

* Please note that our installation cost is based upon a concrete/tarmac surface and extra costs may be incurred where further work is needed.

Product code: SQ001

Additional Information

Best Sellers M2	No
-----------------	----

Additional Options

Choose Finish	Powder coated colour	£0.00
	Galvanised +£300.00 ex VAT	£330.00
	Galvanised and powder coated colour +£300.00 ex VAT	£330.00
RAL Colour Code	1023 Traffic Yellow	£0.00
	3000 Flame Red	£0.00
	5002 Ultramarine Blue	£0.00
	5017 Traffic Blue	£0.00
	6005 Moss Green	£0.00
	7015 Slate Grey	£0.00
	6024 Traffic Green	£0.00
	9005 Jet Black	£0.00
	9010 Pure White	£0.00
	Custom Colour	£220.00
Custom Colour		£0.00
Polycarbonate Sides	None	£0.00
	Polycarbonate End Panels	£440.00
Smoking Bin	None	£0.00
	Floor Standing Ashtray	£148.00
	Wall Mounted Ashtray	£81.25
Installation Bolts	None	£0.00
	Installation Bolts +£50.00 ex vat	£55.00

